



KEMENTERIAN SAINS,
TEKNOLOGI DAN INOVASI
MINISTRY OF SCIENCE, TECHNOLOGY AND INNOVATION

MRANTI

Bringing Ideas to Impact

MRANTI fast-tracks Malaysia's tech and innovation commercialisation to global excellence. True impact begins with big ideas on even bigger launchpads.



@mymranti

Our Vision

Malaysia as the **nucleus for innovation** and a **leading technology producer nation**

Our Mission

Accelerate the development of demand-driven **R&D in Technology and Innovation** across the industries to **address national and global challenges**

Our Impact Areas

Improving Economic Growth through
R&D commercialisation

Increasing Malaysia's
Commercialisation Rate

Growing Local Tech Champions

Addressing National challenges -
Food security & Healthcare using 4IR

Attracting Domestic / Foreign Direct
Investment (DDI/FDI)

High Skilled Job Creation

Phase 3
Living Lab Precinct

Phase 1
Innovation Getaway Precinct

Phase 2
Learning & Creative Media Precinct

MRANTI Park Masterplan

Land Owner: Pesuruhjaya Tanah Persekutuan (PTP) / Federal Land Commissioner (FLC)
Master Lease Holder: MRANTI Corporation Sdn. Bhd.

Autonomous Tech

DroneTech & Robotics

Unmanned aerial vehicles (drones) and robotic technologies for various applications

Impact Area (MDTAP30 & NRR): Increase GDP (RM50.71b) & High Skilled Jobs (100k) by 2030

Autonomous Vehicle

Self-driving vehicle technology without human intervention

Proposed Impact Areas: Increase GDP (via Next Gen. Vehicles, Port Automation, Smart Townships) and Reduction in Road Fatalities

Life Sciences

HealthTech

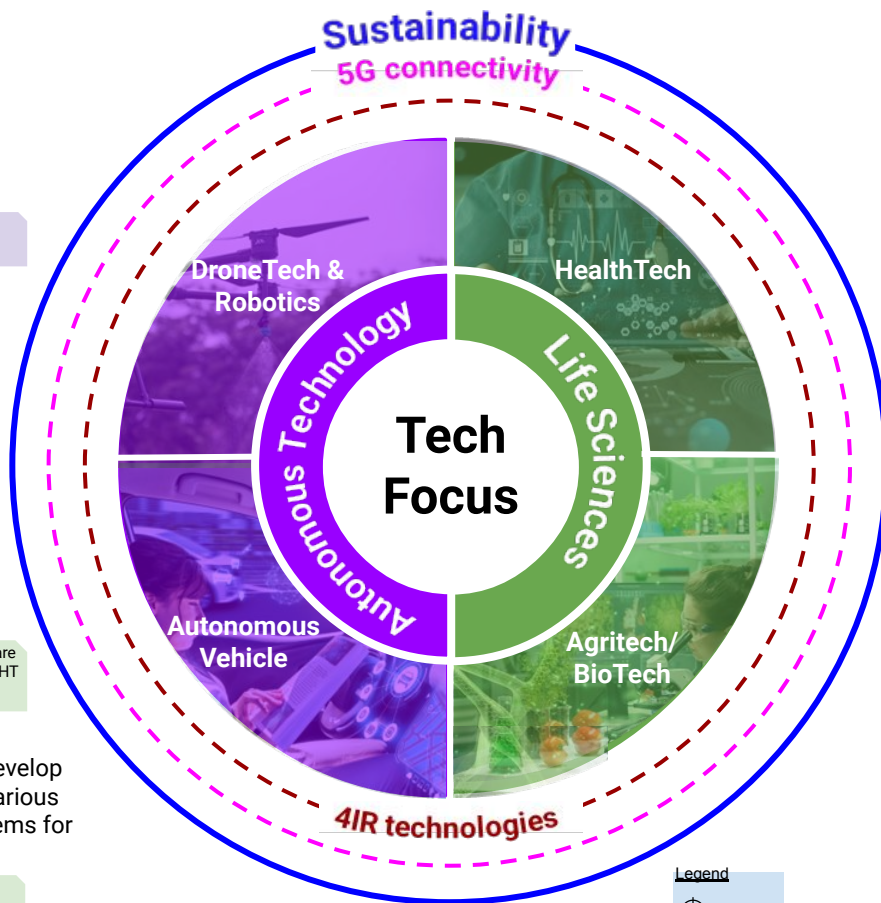
Technology-enabled healthcare outside hospitals/clinics

Proposed Impact Area: Reduce National Healthcare Expenditure (2022 - RM80b), Speed of innovative HT solutions to market, Sickcare → Healthcare

Agritech/BioTech

Application of biological processes to develop products and technologies benefitting various industries by harnessing biological systems for specific purposes

Proposed Impact Area: Increase Food Security, Reduce food import bill (2013-2023: RM483b)



Legend

Impact

Sustainability

- Accelerating sustainability-driven innovation & technologies

5G Connectivity

- Provision of National Testbed for 5G Innovation

4IR Technologies

- Advancing emerging technologies



The HealthTech Hub Programme



A dedicated programme designed to provide facilitation to innovators throughout various R&D&C&I stages in 6 core areas

Pilot and validation

Capacity Building

Regulatory

Funding and Investment

Market Access

Strategic Partnership



A one-stop integrated centre to **accelerate commercialisation of healthtech & medtech innovation** in Malaysia

Integrated Healthcare Cluster (IHC)



10-acre of land dedicated to host relevant infrastructure aimed to nurture the growth of healthcare innovation in MRANTI Park

**to be ready by 2026*

Testing Facility

Prototyping Facility

Incubator

Manufacturing Facility

R&D Centres

Showcase & Training Centres

Revolutionizing Healthcare: HealthTech in Focus



7 Public Hospitals

1. Hospital Tunku Azizah, KL
2. Hospital Putrajaya
3. Institut Kanser Negara, Putrajaya
4. Hospital Bera, Pahang
5. Hospital Rembau, Negeri Sembilan
6. Hospital Rehabilitasi Cheras
7. Hospital Slim River

3 University Hospitals

1. Hospital Al-Sultan Abdullah, UiTM
2. University Malaya Medical Centre
3. Hospital Pengajar dan Pusat Kesihatan Prima UNIMAS

5 Private Hospitals

1. Subang Jaya Medical Centre (SJMC)
2. Mahkota Medical Centre, Melaka
3. Regen Rehab Hospital, Selangor
4. Institut Jantung Negara (IJN)
5. Island Hospital, Penang

15

Sandbox Hospitals
to Accelerate
Commercialisation

Inter-ministry
Collaboration
MOH x MOSTI

1

National Steering
Committee

2

Domain Focus
**HealthTech &
MedTech**

165

companies &
solutions profiled

8

solutions
commercialised
as of May 2024

1,642

entrepreneurs
impacted as of
May 2024

135

companies
facilitated as of
May 2024



Senior Connect by Qmed Asia Sdn Bhd

- Commercialised to SJMC for home monitoring to decongest the hospital
- Developed in partnership with SmartOptz Sdn Bhd, which is another local company
- Qmed is also developing a queue management system for other hospitals to address long waiting time issue



LEGA by Formedic Tech Sdn Bhd

- Commercialised to Pantai and KPJ Hospitals, and various individual users
- LEGA is 100% designed and manufactured in Malaysia
- Currently the technology is being considered for SRF funding for the purpose of developing LEGA-i (LEGA with AI)

MRANTI

Ideas to Impact

Let's connect!

